



## Click&DECiDE Appliance Models 1 & 2



### Increase your scalability, together with your configuration flexibility!

Click&DECiDE, the Network & Security Intelligence Specialist provides an all-in-one enterprise-class solution Click&DECiDE Appliance Models 1 & 2.

Click&DECiDE's Appliances simplify the installation and configuration of software components involved in managing your network, web, mail, security, or system data, whether you are a large enterprise or a small business.

### Simplify installation and configuration

Easy to deploy and administer, Click&DECiDE Appliance Models 1 & 2 offer great configuration flexibility in a 2U chassis.

Click&DECiDE's Appliances incorporate the latest version of Click&DECiDE Network and Security Intelligence (NSI), and add quick installation options for increased deployment and configuration flexibility.

Click&DECiDE Appliances allow companies to analyze thousands of events per second over a long period of time, easily reaching several tens of millions of events per day.

### Features

#### Click&DECiDE Appliance Model 1

- Rack 2U, 1 Quad Core Processor.
- 4 GB RAM.
- 3 Disks 15K rpm with 140+ GB in RAID 5 i.e. 280+ GB usable.
- Redundant Power Supply.
- Windows 2003 Server & SQL Server 2005 OEM License.
- On-site Maintenance for 1-3 years.
- Click&DECiDE Appliance Monitoring License.

#### Click&DECiDE Appliance Model 2

- Rack 2U, 2 Quad Core Processor.
- 4GB RAM.
- 3 Disks 15K rpm with 280+ GB in RAID 5 i.e. 560+ GB usable.
- Redundant Power Supply.
- Windows 2003 Server & SQL Server 2005 OEM License.
- On-site Maintenance for 1-3 years.
- Click&DECiDE Appliance Monitoring License.

*"Enterprises have been facing network & security intelligence challenges: how to get the pertinent data from their network and security infrastructure, so that they can take factual decisions."* says Marc Hudavert, CEO at Click&DECiDE.

*"Our new appliance-based products Click&DECiDE Network & Security Intelligence, Professional and Enterprise Packages, bring the necessary value to solve these challenges. Our appliances provide the ease of use, scalability, security, performance, and reliability that an enterprise needs in an integrated, easy to manage solution. We believe that adding this integrated solution to our portfolio definitely brings value to all enterprises looking for bringing real intelligence to Network and Security."*

### CUSTOMER BENEFITS

- ◆ **EASY:** Bring ease of use to installation, and configuration, for both large and small enterprises.
- ◆ **SCALEABILITY:** Increase capacity to deploy, to scale, and administrate.
- ◆ **FLEXIBILITY:** Configuration flexibility in a 2U chassis for space-conscious internal storage capacity.
- ◆ **PERFORMANCE:** Analyze thousands of events per second to several dozens of millions of events per day.
- ◆ **MANAGEABILITY:** Centralized security and administration for optimal IT manageability.

### Characteristics

#### Processors

1 or 2 Intel® Xeon® Processors according to the model, PE2950 III Quad-Core Xeon minimum.

#### Chipset

Intel 5000X, Front Side Bus (FSB)

#### Memory

4GB 667MHz FBD (4x1GB dual rank DIMMs)

#### Operating Systems

Microsoft® Windows® Server 2003 R2 SP2, 32 bit Standard Edition

#### Hard Drives

3.5" SAS (15K rpm): 140+ GB, 280+ GB according to the model. Up to 6 x 3.5 " Hard Drives

#### Optical Drive

8X IDE DVD-ROM Drive

#### Drive Controllers

Integrated SAS 6/i (base): 4 port SAS controller with ARM966 processor (does not support RAID)  
Integrated PERC 6/i integrated daughter-card (optional) SAS 3.0 Gb/s RAID controller with Intel IOP Intel IOP333 processor and 256 MB cache

#### Communication

Dual embedded Broadcom® NetXtreme II™ 5708 Gigabit Ethernet NIC with fail-over and load balancing.



The best “intelligence\*performance” value

Easy and Flexible

## Characteristics

### Power

AC configuration with standard redundant 750W hot-plug auto-switching universal 110/220 V AC power supplies

### Availability

Hot-plug hard drives  
Hot-plug redundant power  
Hot-plug redundant cooling  
ECC memory  
Spare row  
SDDC (Single Device Data Correction)  
PERC6/i integrated daughtercard w/battery-backed cache

### Chassis

2U Rack-mountable chassis  
29.31 " (74.4cm) D x 17.5 " (44.43cm) W x 3.4 " (8.64cm) H with bezel attached  
Rack weight 50.71 lbs (23Kg), maximum configuration

### Ports

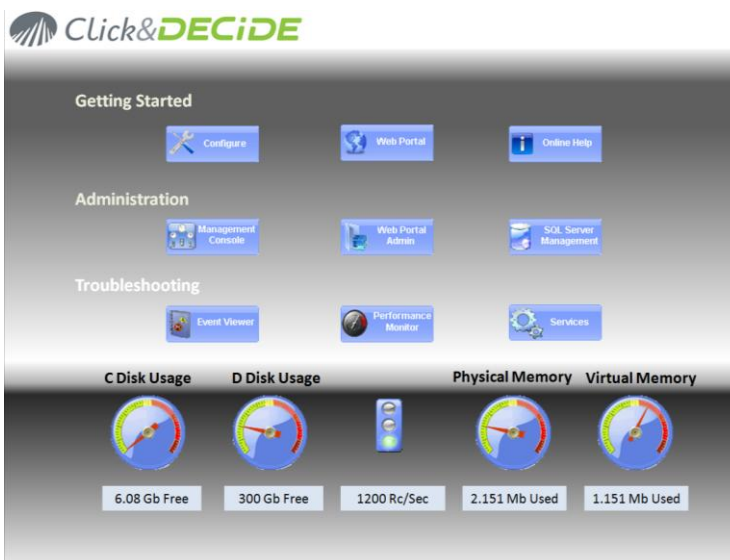
Rear: 2 x USB 2.0, 1 serial connector, 1 x video connector, 1 x RJ45 for DRAC 5/I for advanced capabilities  
Front : 2 x USB 2.0, 1 x video connector  
Internal USB Port

### Environmental requirements

Operating Temperature: 10 °C to 35 °C  
Storage Temperature: -40 °C to 65 °C  
Operating Relative Humidity (non-condensing twmax=29C): 20 % to 80 % non-condensing  
Maximum humidity gradient: 10 % per hour, operational and non-operational conditions  
Storage Relative Humidity: 5 - 95 % non-condensing (twmax = 38 °C)  
Operating Shock: 1 shock pulse of 41G for up to 2ms

### Certifications

FCC (U.S.) only Class B  
ICES (Canada) Class B  
CE Mark (EN 55022 Class B, EN55024, EN61000-3-2, EN61000-3-3)  
VCCI (Japan) Class B  
BSMI (Taiwan) Class A  
C-Tick (Australia/New Zealand) Class B



Click&DECiDE's Appliance-based NSI solution simplifies overall installation, configuration, and scalability for organizations, optimizes performance, and maximizes return on security investments.

## Availability

Click&DECiDE's Appliances 1 & 2 are now available via our partners worldwide.

[Click here](#) to locate your nearest supplier.

## About Click&DECiDE

Click&DECiDE is a one-stop-shop for companies log management needs:

- Log centralization and archival.
- Dashboard generation and reporting.
- Event correlation and alerting.
- Forensic analysis and data manipulation.

## Contact

Sales Office: 98, Route de la Reine – 92100 Boulogne BT, France

e-mail: [sales@clickndecide.com](mailto:sales@clickndecide.com)

Tel: +33 1 71 99 86 60

Cell: +33 6 26 88 42 74